

### Locknut Sockets

**No. 7090A** – Services 1978–84 Ford F-series H.D. 3/4- and 1-ton 4WD trucks; 1973–81 GM 3/4- and 1-ton 4WD trucks. 1/2" sq. drive. Wt., 1 lb., 11 oz.

**No. 7157** – Services 1993–newer Ford Ranger Bronco II and Explorer with manual hubs; 1995–96 Ford F-series 1/2-ton truck and full-size Bronco with manual hubs; 1995–newer Ford F-series 3/4-ton and 1-ton trucks with manual hubs; 1959–85 Ford F-series 1/2- and 3/4-ton trucks and full-size Bronco; 1960–90 GM 1/2-ton truck and full-size Blazer/Jimmy; 1969–89 Dodge 1/2-ton truck with manual hubs; 1969–72 International 1/2-ton truck. 1/2" sq. drive. Wt., 1 lb., 8 oz.

**No. 7158** – Services 1985-1/2–95 Ford F-series H.D. 3/4- and 1-ton Dana 50 IFS of Dana 60 front axle; 1982–90 GM H.D. 3/4- and 1-ton trucks, 1994–newer Dodge Dana 60 with Cummins. 1/2" sq. drive. Wt., 1 lb., 13 oz.

**No. 7795** – Services 1995–1996 Ford F-series 1/2-ton trucks and full-size Bronco with automatic hubs. 1/2" sq. drive. Wt., 1 lb., 11 oz.

**No. 7796** – Services 1995–1998 Ford F-series 3/4- and 1-ton trucks with automatic hubs. 1/2" sq. drive. Wt., 2 lbs., 2 oz.

**No. 7270A** – Services 1984–92 Ford Ranger and Bronco II with manual hubs; 1986–95 Ford F-series 1/2-ton truck; full-size Bronco with Dana 44 front axle; 1990–93 Dodge trucks with Dana 44 automatic hubs. 1/2" sq. drive. Wt., 1 lb., 8 oz.

**No. 7269** – Services 1985–newer Ford F-series 3/4- and 1-ton trucks with Dana 80 rear axle. 1/2" sq. drive. Wt., 3 lbs.

**No. 7698** – Services 1988–1995 Isuzu Trooper, Rodeo, Amigo, and pickup; 1989–1995 Honda Passport; Jeep J20 pickups with Dana 60 axle. 1/2" sq. drive. Wt., 1 lb., 5 oz.

**No. 7913** – Used to remove and install locknut on 1997–2000 Suzuki Samurai and Geo Tracker front hubs. Wt., 2 lbs., 2 oz.

**No. 7612** – 54 mm hex socket fits front wheel bearing adjusting nut of Toyota FJ, LN, and RN. Has 1/2" square drive end, permitting use of a torque wrench. 1/2" sq. drive. Wt., 1 lb., 15 oz.

**No. 7941** – Specially designed to fit 4WD lock-out hubs on Toyota's 1995–2002 Tacoma, and 1996–2002 T100 and 4Runner. Similar to Toyota No. 09318-12010-01. Wt., 8 oz.

**No. 6006** – Services 1994–newer Dodge 1/2-ton 4x4 pickups with Dana 44 front axle and Dana 60 axle with vacuum disconnect front axle. Wt., 1 lb., 10 oz.

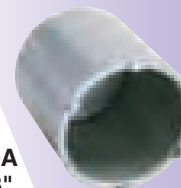
**No. 6064** – Services 1992–newer Toyota trucks with full-floating axle. 1/2" sq. drive. Wt., 1 lb. 13 oz.

**No. 1902** – Services 1984–92 Ford Ranger and Bronco II with automatic hubs; 1993–1997 Ford Ranger, Bronco II, and Explorer with automatic hubs. 1/2" sq. drive. Wt., 1 lb., 14 oz.

**No. 1928** – Services 1990–93 Dodge truck with Dana 60 manual hubs. 3/4" sq. drive. Wt., 2 lbs., 2 oz.

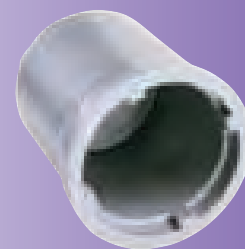
**No. 1936** – Services 1990–newer Ford Ranger, Bronco II, and Explorer with automatic hubs. Wt., 1 lb., 15 oz.

**No. 6601** – Services 2003–newer Ford F-250, F-350, and F-450 Super Duty trucks with 10-1/2 inch rear axle. Wt., 2 lb., 15 oz.



**7090A**  
2-5/8"

Same as Ford  
No. 205-D001  
(D78T-1197-A)



**7157**  
2-1/4"

Same as Ford  
No. 205-192  
(T83T-1197-B)



**7158**  
2-1/2"

Same as Ford  
No. 205-D065 (D85T-1197-A)



**7795**  
2-1/2"

Same as Ford  
No. 205-348  
(T95T-1197-A)



**7796**  
2-3/4"

Same as Ford  
No. 205-349  
(T95T-1197-B)



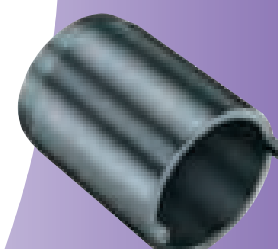
**7270A**  
2-3/8"

Same as Ford  
No. 205-244  
(T86T-1197-AR)



**7269**  
2-3/4"

Same as Ford  
No. 205-282  
(T88T-4252-A)  
Kent Moore  
No. J-42855



**7698**  
2-1/4"



**6601**

Same as Ford  
No. 205-448

# AUTOMOTIVE SPECIAL TOOLS

## Locknut Sockets



**7913**  
Same as Kent-Moore  
No. J-42119



**7941**  
2.366 center to  
center on pins



**6064**  
1.972 center to  
center on pins



**1928**  
2-9/16"



**6283**



**6601**  
Same as Ford  
No. 205-448



**7612**  
2-1/8"  
54 mm



**6006**  
1-11/16"  
43 mm



**1902**  
2-3/8"



**1936**  
2-3/8"

### FW Bearing Locknut Sockets Application Chart

Vehicle	OTC No.	Ford No.	Global No.
1984-92 Ford Ranger & Bronco II with manual hubs with automatic hubs	<b>7270A</b> <b>1902</b>	T86T-1197-AR T70T-4252-B	205-244 205-039
1993-95 Ford Ranger, Bronco II, and Explorer with manual hubs with automatic hubs	<b>7157</b> <b>1902</b>	T83T-1197-B T70T-4252-B	205-192 205-039
1990-95 Ford Ranger, Bronco II, and Explorer with automatic hubs	<b>1936</b>	N/A	N/A
1995-96 Ford F-series 1/2-ton trucks and full-size Bronco with manual hubs with automatic hubs	<b>7157</b> <b>7795</b>	T83T-1197-B T95T-1197-A	205-192 205-348
1995-98 Ford F-series 3/4- and 1-ton trucks with manual hubs with automatic hubs	<b>7157</b> <b>7796</b>	T83T-1197-B T95T-1197-B	205-192 205-349
1978-84 Ford F-series H.D. 3/4- and 1-ton 4WD trucks	<b>7090A</b>	D78T-1197-A	205-D001
1985 1/2-95 Ford F-series H.D. 3/4- and 1-ton Dana 50 IFS or Dana 60 front axle	<b>7158</b>	D85T-1197-A	205-D065
1985-95 Ford F-series 1/2-ton truck and full-size Bronco with Dana 28 front axle	<b>7158</b>	D85T-1197-A	205-D065
1959-85 Ford F-series 1/2- and 3/4-ton truck and full-size Bronco	<b>7157</b>	T83T-1197-B	205-192
1986-95 Ford F-series 1/2-ton truck and full-size Bronco with Dana 44 front axle	<b>7270A</b>	T86T-1197-AR	205-244
1985 and 2002 Ford F-series 3/4- and 1-ton truck with Dana 80 rear axle	<b>7269</b>	T85T-4252-AH T88T-4252-A	205-230 205-282
2003-newer Ford F-250, 350, 450 Super Duty w/10-1/2" rear axle	<b>6601</b>	N/A	205-448
1973-81 GM 3/4- and 1-ton 4WD trucks	<b>7090A</b>	N/A	N/A
1960-90 GM 1/2-ton truck and full-size Blazer/Jimmy	<b>7157</b>	N/A	N/A
1982-90 GM H.D. 3/4- and 1-ton trucks	<b>7158</b>	N/A	N/A
1989-96 Tracker	<b>6283</b>	N/A	N/A
1969-72 International 1/2-ton trucks	<b>7157</b>	N/A	N/A
1969-89 Dodge 1/2-ton trucks with manual hubs	<b>7157</b>	N/A	N/A
1990-93 Dodge trucks with Dana 44 automatic hubs	<b>7270A</b>	N/A	N/A
1990-93 Dodge trucks with Dana 60 manual hubs	<b>1928</b>	N/A	N/A
1988-95 Isuzu Trooper, Rodeo, Amigo, and pickup; 1989-95 Honda Passport; and Jeep J20 pickups with Dana 60 axle	<b>7698</b>	N/A	N/A
1982-97 Toyota trucks, models FJ, LN, RN, with 54 mm 6 pt. nuts	<b>7612</b>	N/A	N/A
1995-2002 4WD Toyota Tacoma and 1996-2002 4WD Toyota T100 and 4Runner, all with lockout hubs	<b>7941</b>	N/A	N/A
1997-2000 4WD Geo Tracker and Suzuki Samurai	<b>7913</b>	N/A	N/A

### 7-Piece Wheel Bearing Locknut Socket Set

- For use with 1/2" ratchet or breaker bar.

Set contains:

No. 519097-7 – 55 mm hex locknut socket designed for use on front wheel adjusting nuts found on Toyota models FJ, LN, and RN.

No. 519097-1 – 2-3/8" hex locknut socket works on 1984–92 Ford Rangers and Bronco IIs with automatic locking hubs. Similar to Ford No. 205-040 (T70T-4252-B).

No. 519097-3 – 2-1/2" hex locknut socket fits the hex nut found on rear axles and various front axle applications on light-duty trucks.

No. 519097-5 – 2-1/2" rounded hex locknut socket works on 1995–96 Ford F-150 trucks and full-sized Broncos with automatic locking hubs. Similar to Ford No. 205-348 (T95T-1197-A).

No. 519097-4 – 2-3/4" rounded hex locknut socket works on 3/4-ton and 1-ton Ford F-250 and F-350 trucks with automatic locking hubs. Similar to Ford No. 205-349 (T95T-1197-B).

No. 519097-2 – 2-9/16" rounded hex locknut socket works on 1990–93 Dodge trucks with Dana 60 manual hubs.

No. 519097-6 – 2-3/8" rounded hex locknut socket works on 1990–newer Ford Rangers, Bronco IIs, and Explorers with automatic locking hubs.

**No. 4542** – Wheel bearing locknut socket set (7 piece).  
Wt., 11 lbs., 7 oz.



4542

### Axle Nut Socket Set – FWD (7 piece)

- Extra long, 1/2" drive chrome molybdenum sockets for heavy-duty use in removing and installing axle nuts.
- Use with a ratchet, breaker bar, or torque wrench.
- Contained in a blow-molded plastic storage case.

Contents of set:

No. 4547-29 – 29 mm socket services various late model GM, Ford, and Asian imports.

No. 4547-30 – 30 mm socket services GM body styles A, J, and N, plus Asian imports.

No. 4547-32 – 32 mm socket services late model Honda and Chrysler vehicles.

No. 4547-34 – 34 mm socket services many GM mid-size vehicles.

No. 4547-35 – 35 mm socket services many GM vehicles.

No. 4547-36 – 36 mm socket services many GM, Ford, and Chrysler full-size vehicles.

No. 4547-38 – 38 mm socket services various full-size vehicles including SUVs.

**No. 4547** – Axle nut socket set (7 piece).  
Wt., 10 lbs., 6 oz.



4547

# AUTOMOTIVE SPECIAL TOOLS

## Locknut Sockets



### Locknut Socket Set – 4WD (6 piece)

- Chrome vanadium steel sockets cover most SUV and light truck applications.
- Sockets have 1/2" square drive, allowing use of a torque wrench, ratchet, or breaker bar.

Contents of set:

No. 4543-1 – Toyota 4-lug locknut socket. Services high-torque locknuts on Toyota 4WD vehicles having free-wheel (lock out) hubs: 1995–newer Tacoma; 1996–newer T100 and 4Runner.

No. 4543-2 – Ford 4-lug locknut socket for high-shear rotating nuts on 1985–newer F-250 and F-350 truck rear axles, and Dana 80 rear axles of Ford Super Duty trucks.

No. 4543-3 – 4-lug socket for removing and installing 4-slot front axle locknuts on 1986–newer F-Series 1/2-ton trucks, full-size Bronco with Dana 44 axle, 1984–92 Ford Ranger, and Bronco II with manual hubs. Also, Dodge trucks using Dana 44 axle with automatic hubs.

No. 4543-4 – 6-lug socket for removing and installing 4-slot front axle locknuts on 1978–84 Ford F-Series 4WD heavy-duty 3/4- and 1-ton trucks; 1973–81 GM 4WD 3/4- and 1-ton trucks.

No. 4543-5 – 4-lug socket for removing and installing 4-slot front axle locknuts on 1993–newer Ford Ranger, Bronco II, and Explorer with manual hubs; 1995–newer F-Series 1/2-, 3/4-, and 1-ton trucks and full-size Bronco with manual hubs; 1959–85 F-Series 1/2- and 3/4-ton trucks and full-size Bronco; 1960–90 GM 1/2-ton trucks and full-size Blazer/Jimmy; 1969–72 International 1/2-ton trucks; 1969–89 Dodge 1/2-ton trucks with manual hubs.

No. 4543-6 – FWD front spindle puller. Removes front spindle to access needle bearing, when lubricating and aligning front wheels. 5/8"-18 fine thread permits use with OTC No. 1155 slide hammer. Fits spindle thread sizes 2"-16, 1-5/8"-16 and 38 mm-1.5. Applications: Full-size GM, Ford, Jeep, and International pickups with Dana front axles, plus Ranger and Bronco II.

- A blow-molded plastic storage case keeps set contents organized and protected from loss.

**No. 4543** – 4WD spindle nut socket set (6 piece).  
Wt., 13 lbs.

### 1/2" Drive Locknut Socket Set

- These are not light-hearted sockets; they feature a 1/2" square drive, and can be used with an extension and torque wrench for accurate tightening.
- For use on the rounded and standard hex nuts found on the most popular light-duty trucks on the road.
- Unlike the competition, these sockets are backed by the famous OTC Lifetime Marathon Warranty® against defects in materials and workmanship.

**No. 6010** – Locknut socket set. Includes one each: Nos. 6612, 6795, 6796, 6902, 6921, 6928, 6936. Wt., 12 lbs.

#### Set includes one each of the following:

**No. 6612** – 54 mm hex locknut socket designed for use on front wheel adjusting nuts found on Toyota FJ, LN, and RN models. Wt., 1 lb., 8 oz.

**No. 6902** – 2-3/8" hex locknut socket works on 1984–92 Ford Rangers and Bronco IIs with automatic locking hubs. (Ford No. T70T-4252-B and 205-040). Wt., 1 lb., 8 oz.

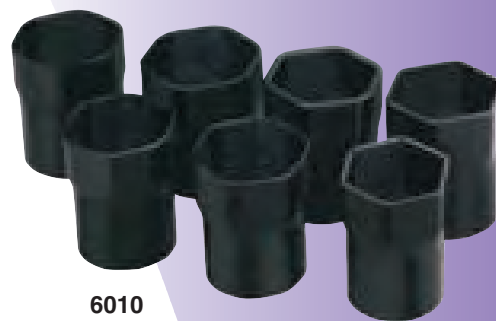
**No. 6921** – 2-1/2" hex locknut socket fits hex nut found on rear axles and various front axle applications on light-duty trucks. Wt., 1 lb., 8 oz.

**No. 6795** – 2-1/2" rounded hex locknut socket. Works on 1995–96 Ford F-150 trucks and full-sized Broncos with automatic locking hubs. (Ford No. T95T-1197-A and 205-348). Wt., 1 lb., 8 oz.

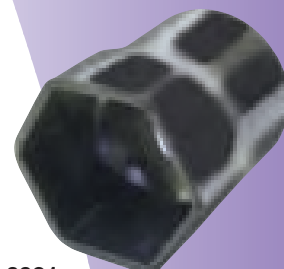
**No. 6796** – 2-3/4" rounded hex locknut socket. Works on 3/4- and 1-ton Ford F-250 and F-350 trucks with automatic locking hubs. (Ford No. T95T-1197-B and 205-349). Wt., 1 lb., 8 oz.

**No. 6928** – 2-9/16" rounded hex locknut socket. Works on 1990–93 Dodge trucks with Dana 60 manual hubs. Wt., 1 lb., 8 oz.

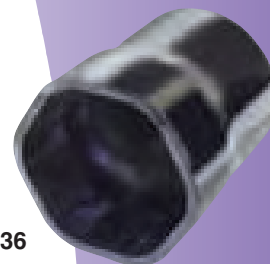
**No. 6936** – 2-3/8" rounded hex locknut socket. Works on 1990–newer Ford Rangers, Bronco IIs, and Explorers with automatic locking hubs. Wt., 1 lb., 8 oz.



6010



6612, 6902, 6921



6795, 6796, 6928, 6936

### Brake Pressure Test Kit

Kit contains a complete set of fittings and gauges for pressure testing ABS and conventional brake systems on Chrysler, Ford, GM, Jeep, and import vehicles.

- Includes an organizer case

**No. 7488A** – Brake pressure test kit. Includes two 0–3,000 psi gauges, 16 adapter fittings, two Bosch ABS adapters, one Teves/Delco Powermaster III adapter, one Ford (Teves) adapter, one 90° elbow fitting, one 45° elbow fitting, bleeder, and instructions. Wt., 7 lbs., 10 oz.



7488A