

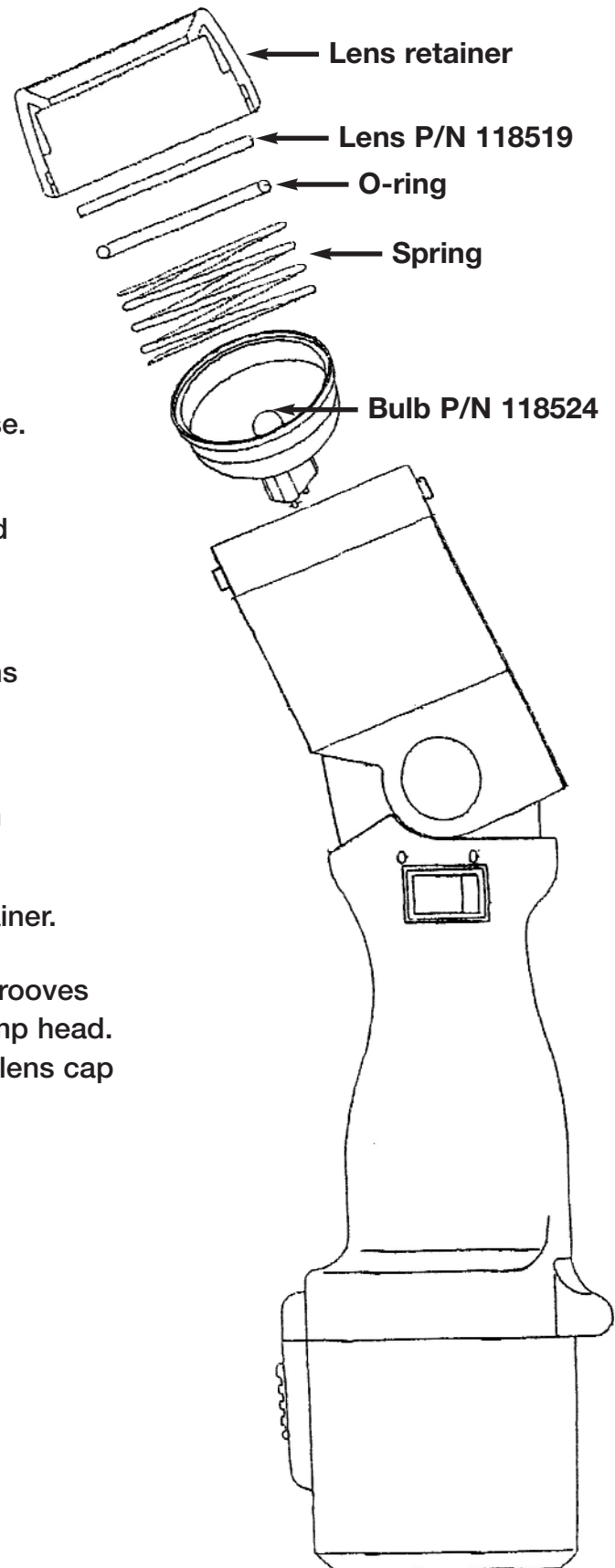
# X-CITER LAMP

## Bulb and Lens

### Changing Instructions

**NOTE: Make sure all parts are cool before attempting to change the lens or bulb.**

1. Remove lens retainer by turning counterclockwise. The lens cap will spring up.
2. To change the bulb, remove bulb from lamp head by pulling bulb straight out from housing and unplugging it from socket.
3. Insert new bulb, making sure to align the two pins on the bulb base with the two holes in the bulb socket; press firmly together.
4. To change the lens, remove O-ring and lens from lens retainer.
5. Insert new lens, and replace O-ring into lens retainer.
6. Place lens cap and spring on lamp head. Align grooves located inside lens cap with retaining pins on lamp head. Push lens cap down, and turn clockwise to lock lens cap onto lamp head.



**SPX** **ROBINAIR**

1-800-628-6496 [www.robinair.com](http://www.robinair.com)

*Service Solutions, a unit of SPX Corporation*

655 Eisenhower Drive, Owatonna, MN  
Phone: 800-822-5561, Fax: 800-822-7805