



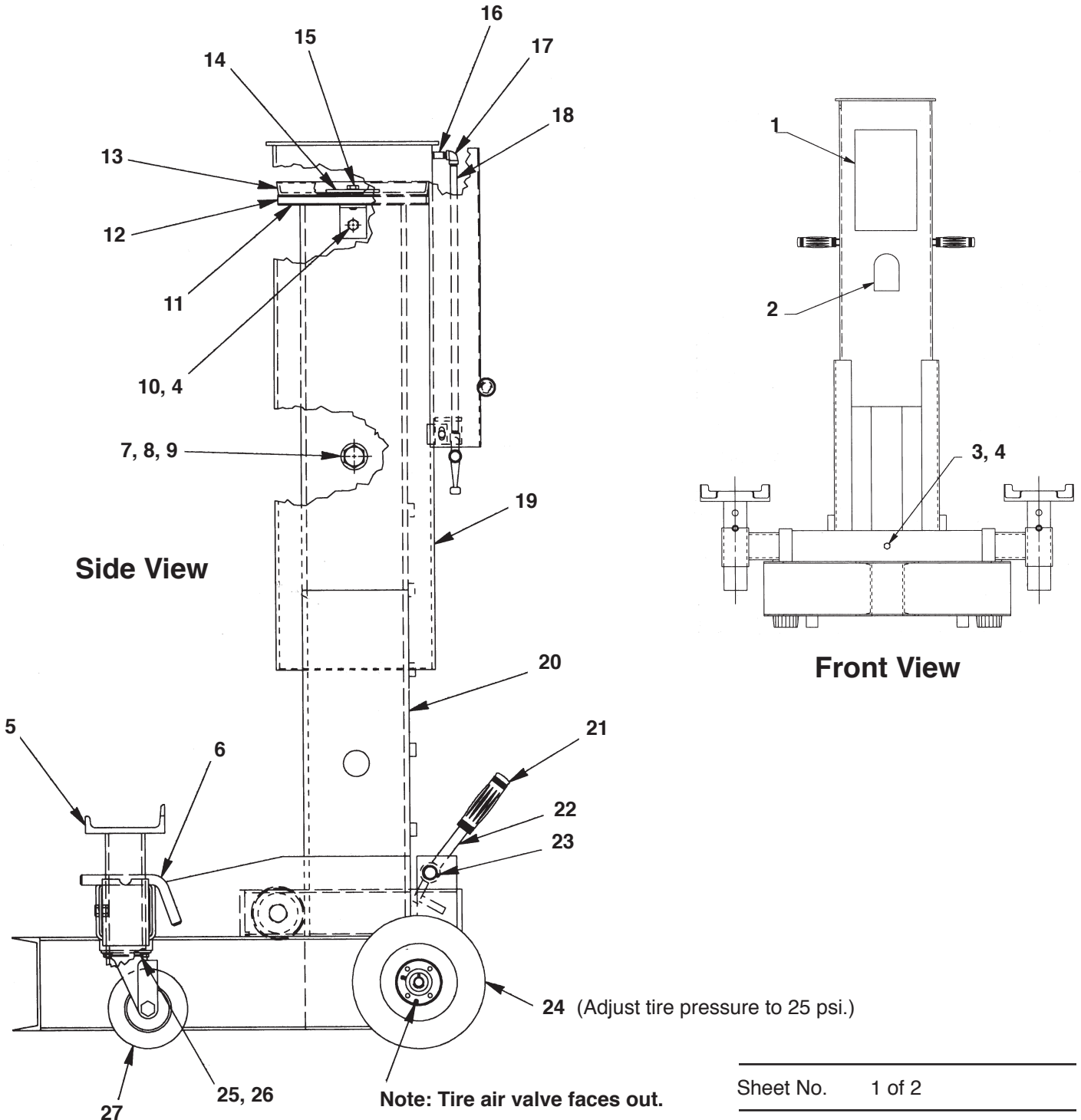
SPX Corporation  
 655 Eisenhower Drive  
 Owatonna, MN 55060-0995 USA  
 Phone: (507) 455-7000  
 Tech. Serv.: (800) 533-6127  
 Fax: (800) 955-8329  
 Order Entry: (800) 533-6127  
 Fax: (800) 283-8665  
 International Sales: (507) 455-7290  
 Fax: (507) 455-7063

Parts List  
 for:

1590

# Air Lift

Max. Capacity: 10 Tons at 200 PSI

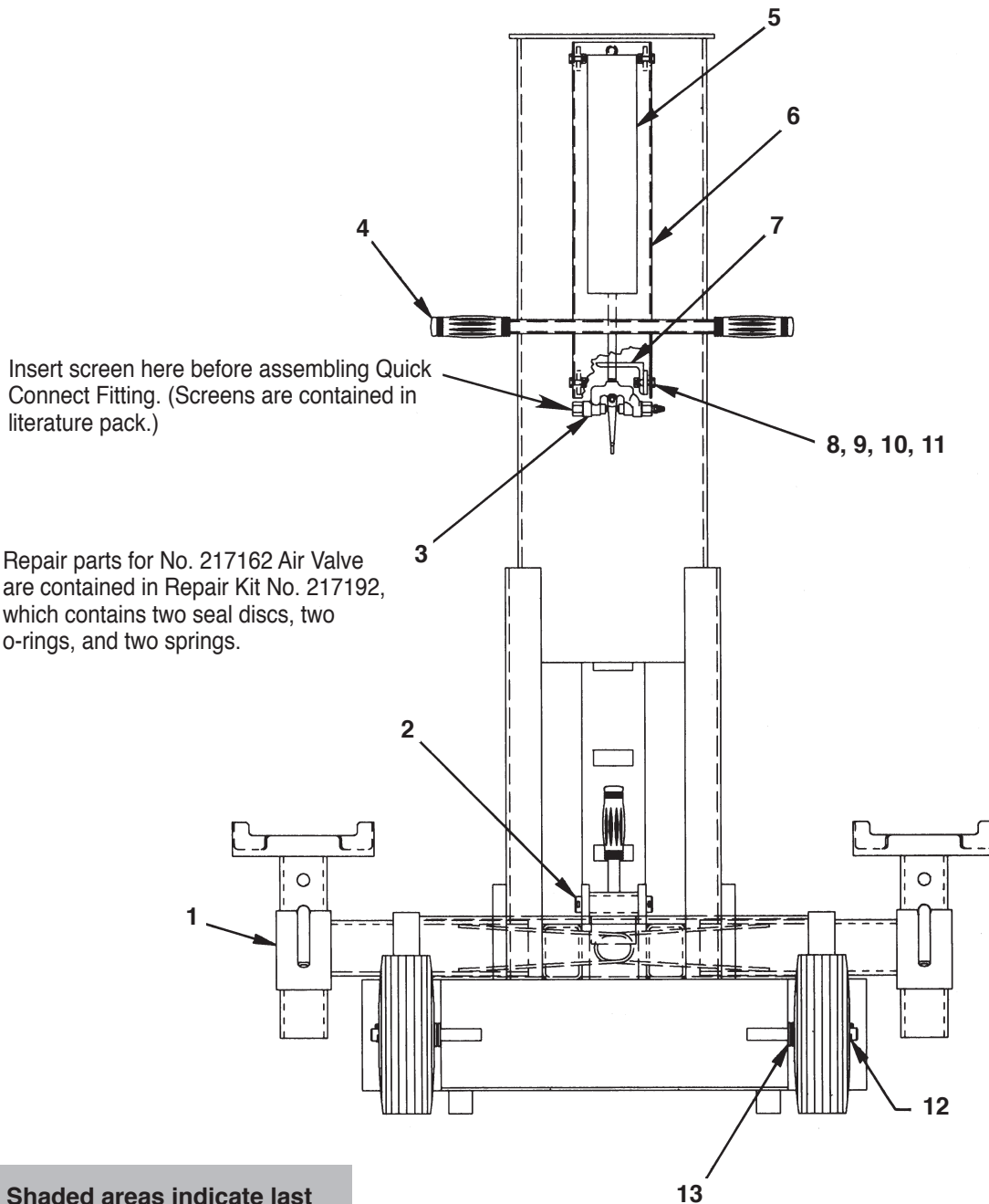


Item No.	Part No.	No. Req'd	Description
1	<b>48250</b>	1	Logo Decal
2	<b>309956</b>	1	Made in USA Decal
3	<b>12371</b>	1	Cap Screw (1/2-13 x 5" lg.)
4	<b>15013</b>	2	Nut (1/2-13)
5	<b>53586</b>	2	Saddle Leg Weldment
6	<b>313881</b>	2	Saddle Pin
7	<b>217158</b>	1	Cap Screw (1"-8 x 5" lg.)
8	<b>10221</b>	1	Nut (1"-8)
9	<b>11253</b>	2	Flat Washer (for 1" bolt)
10	<b>218072</b>	1	Cap Screw (1/2-13 x 5-1/2" lg.)
11	<b>48244</b>	1	Piston Assembly
12	<b>217175</b>	3 ft.	Bearing Strip
13	<b>217164</b>	1	U-cup Packing
14	<b>217172</b>	1	Washer
15	<b>10080</b>	1	Cap Screw (1/2-13 x 1-1/4" lg.)
16	<b>12286</b>	1	Nipple Fitting
17	<b>12287</b>	1	90° Elbow Fitting
18	<b>217161</b>	1	Long Nipple
19	<b>62269</b>	1	Body Weldment
20	<b>62270</b>	1	Stand Assembly
21	<b>11610</b>	1	Handle Grip
22	<b>48246</b>	1	Pivot Stop
23	<b>217176</b>	2	Cotter Pin
24	<b>217163</b>	2	10" Wheel
25	<b>10046</b>	8	Cap Screw (3/8-16 x 3/4" lg.)
26	<b>10247</b>	8	Lockwasher (for 3/8" bolt)
27	<b>212205</b>	2	6" Swivel Caster

Refer to any operating instructions included with the product for detailed information about operation, testing, disassembly, reassembly, and preventive maintenance.

Items found in this parts list have been carefully tested and selected by OTC. **Therefore: Use only genuine OTC replacement parts.**

Additional questions can be directed to our Technical Service Dept.



Shaded areas indicate last revisions made to this form.

Item No.	Part No.	No. Req'd	Description
1	<b>310317</b>	2	Saddle Weldment
2	<b>310324</b>	1	Pin
3	* <b>217162</b>	1	Air Valve
4	<b>18267</b>	2	Handle Grip
5	<b>48247</b>	1	Warning Decal
6	<b>62268</b>	1	Cover Assembly
7	<b>310325</b>	1	Angle
8	<b>10559</b>	4	Cap Screw (5/16-18 x 1-1/4" lg.)
9	<b>10201</b>	4	Nut (5/16-18)

Item No.	Part No.	No. Req'd	Description
10	<b>10246</b>	4	Lockwasher (for 5/16" bolt)
11	<b>10257</b>	4	Plain Washer
12	<b>11018</b>	2	Cotter Pin
13	<b>12330</b>	†AR	Flat Washer (for 3/4" bolt)

†as required; max of (4) washers per side