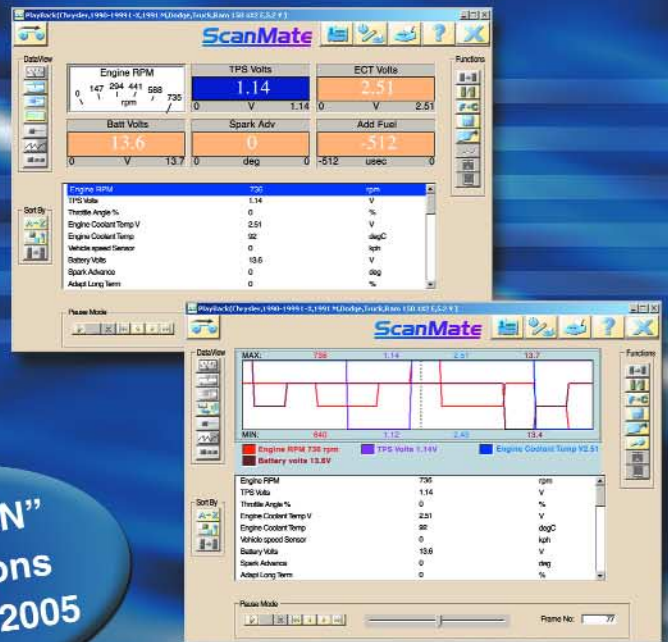


# OTC Nemisys



More "CAN"  
applications  
added for 2005

## Many Powerful Features

- 320 X 240 Monochrome Graphic Display
- Data Graphing
- USA Domestic OBD I & OBD II coverage (1984 thru 2005)
- Global OBD II Asian & European coverage (1996 thru 2005)
- Domestic Enhanced Data & DTCs
  - Engine, Transmission, ABS, Air Bag
- New Asian '05 enhanced kit available
- CAN Enabled—no adapters to buy
- OBD II Mode 6
- Repair Information
  - Typical Sensor / Data Specs
- Record / Playback
- ScanMate Lite PC Software
  - File Storage, File Playback, File Print
- Vehicle Protocols: CAN, J1850 VPM, J1850 PWM, ISO 9141, Keyword 2000, UART, SCP, SCI, CCD, and more.

## FREE ScanMate PC Software

Upload recordings, play back recordings, print reports, export captured data in spreadsheet format, get Internet updates, email and share data recordings, view data in line graph, bar graph, meter, digital, or superimposed format.

## 3793 Nemisys Vehicle Coverage

GM '84–2005 (12- and 16-pin ALDL and OBD II).  
Ford '84–2005 (EEC IV and OBD II) .  
Chrysler '88–2005 (SCI and OBD II).  
Jeep '91–2005 (SCI and OBD II).  
Saturn '91–2005.  
USA Domestic Asian '96–2005 (Global OBD II).  
USA Domestic European '96–2005 (Global OBD II).

## New Optional Asian Coverage

No. 3774-08 Nemisys USA 2005 Asian update kit includes '96-2005 software with enhanced data on Toyota, Honda, Nissan, Mitsubishi, and Mazda.

## FEATURES

- Large 320 X 240 monochrome graphical display with backlight.
- Four software-definable function keys.
- On-screen text in Spanish, French, and English.
- CD-based manuals in Spanish, French, and English.
- Tri-lingual quick Start Guide included to help technicians get started fixing cars FAST.
- Supports powertrain, transmission, ABS, and air bag systems.
- Gasoline and diesel engine coverage.
- Vehicle data communication and power LED indicators.
- Demo mode permits operation without vehicle connection.
- Supports multiple trouble code requests, generic codes (mode 3), pending codes (mode 7), enhanced codes and GM DTC status.
- On-screen definitions of OBD I trouble codes, OBD II generic and OBD II manufacturer specific codes.
- Displays OBD II freeze frame information.
- Displays readiness test status.
- Displays O2 sensor test.
- Test results (mode 6).
- Vehicle ID (mode 9).
- Set measurement units in SAE English/Metric.
- Live Generic and OBD II enhanced data stream display.
- Custom data configuration.
- Automatically records 150 frames of data.
- Three record modes – marker frame, freeze frame history and code triggered record.
- Reset “check engine” lights.
- Data / Sensor Information – sensor data item descriptions, typical sensor values, and repair strategy footnotes with live data.
- Customize data views in line graph, LED, or digital format with the push of a button.
- Includes six AA batteries for uninterrupted power supply and off-vehicle use.
- Protected compact flash memory slot for software updates.
- Internet upgradable.

### Nemisis USA 2005 Domestic Scan Kit

Includes Nemisis scan tool loaded with 2005 software; OBD II cable; Ford, GM, Chrysler OBD I cables; ScanMate Lite PC software; scan tool to PC cable; 12-volt power cable; Quick Start Guide included with CD-based manuals in Spanish, French, English; and a professional carrying case.

**No. 3793** – Nemisis USA 2005 Domestic scan kit.

**No. 3774-07** – Nemisis USA 2005 Domestic update kit ('84-'05).

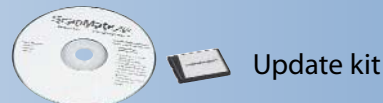
**No. 3774-08** – Nemisis USA 2005 Asian update kit includes '96-2005 software with enhanced data on Toyota, Honda, Nissan, Mitsubishi, and Mazda.

**No. 3774-09** – Nemisis USA 2005 combination update kit. Includes USA 2005 Domestic update ('84-'05) and USA 2005 Asian update ('96-'05).

**Nemisis™ is an automotive scan tool designed and powered by OTC Genisys™ technology. Nemisis™ covers early OBD I systems and all OBD II protocols, including the newly released Controller Area Network (CAN) protocol. CAN protocol was introduced in 2003 model year vehicles and is the mandated protocol in all new vehicles by 2008.**



No. 3793 Scan Kit



Update kit